

# Xtreme Duty - Pneumatic Pump Drive for Drums & IBCs

## Model DM-55PMDL-XP Pump Drive

Pump tubes supplied separately – Example shown below:

Model No. DM-55MPTL/SS, Example Combo Mix-Pump Tube shown here

## Operating Information, Parts Views, Codes

### Pneumatic Pump Drive

This explosion proof pneumatic drum or IBC-tank pump drive uses a lockable On-Off trigger to control transfer flow rate. The pump has an earth-ground connection for hazardous duty operation when used with metal pump tube and a grounding kit P# DM-166GWK. The pump drive is interchangeable with liquid-dedicated pump tubes to prevent cross-contamination, and station-to-station ease of usage.

### Applications & Examples of Liquids Pumped

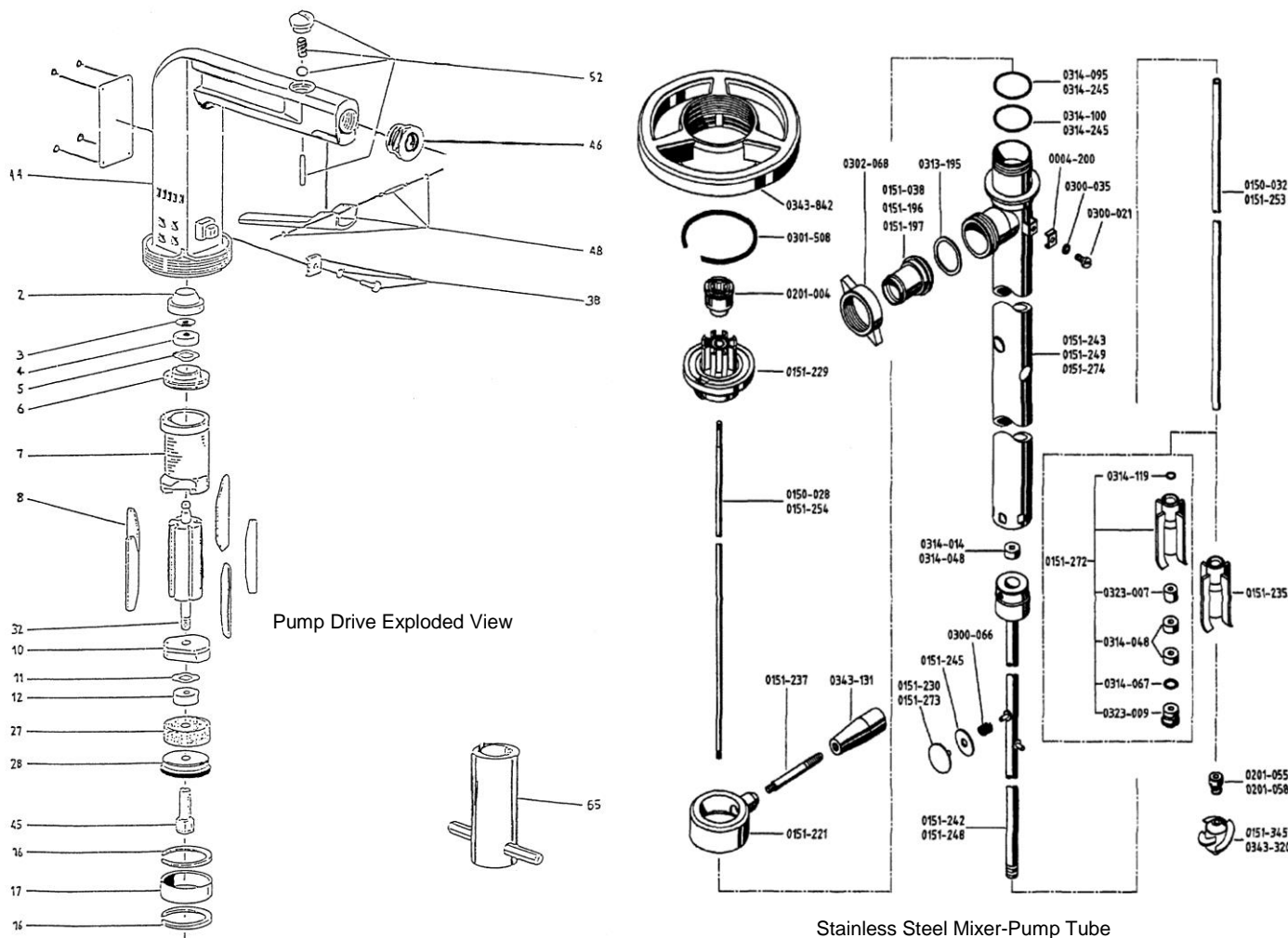
An easily handled, high performance pump for transferring thin-bodied to viscous, aggressive liquids (and flammable liquids with metal pump tubes), including chemicals, concentrates, corrosives and many liquid compounds up to 1600 Cps. Or higher, depending on tube choice. The “Combo-Mixer-Pump” shown here.

### Pump Tubes - supplied separately

Many pump tubes are available. Below is the P# **DM-55DMP/LPP39** stainless steel, Combo Mix-Pump tube, mechanically sealed, 39" or 47" length. The tube is used with P# **DM-55BA/SS** safety drum bung adapter for secure mounting. **WARNING!** Plastic tubes should never be used in flammable operations.

### Operating Data (Note: transfer specifications change with different tubes)

|                |              |                  |                                   |
|----------------|--------------|------------------|-----------------------------------|
| Flow rate:     | up to 51 Gpm | Viscosity range: | up to 1600 Cps (centipoise)       |
| Delivery head: | up to 36 Ft. | Immersion depth: | 2 Options: 39 inches or 47 inches |
| Temp. range:   | up to 212° F | Weight:          | Pump assembly, 7 lbs.             |



**Model DM-55PMDL-XP Pump Drive**  
**SPARE PARTS LIST**

---

| Pos. # | Part #    | Description         |
|--------|-----------|---------------------|
| 2      | 0371-425  | Protection Cap      |
| 3      | 0301-942* | Snap Ring           |
| 4      | 0321-066* | Ball Bearing        |
| 5      | 0301-695* | Bearing Washer      |
| 6      | 0204-216* | Bearing Plate       |
| 7      | 0371-428  | Stator              |
| 8      | 0343-169* | Vane                |
| 10     | 0204-217  | Bearing Washer      |
| 11     | 0301-694* | Ball Bearing Washer |
| 12     | 0321-926* | Ball Bearing        |
| 16     | 0301-435  | Snap Ring (2)       |
| 17     | 0343-162  | Sleeve              |
| 27     | 0372-048  | Sound Absorber      |
| 28     | 0371-455  | Threaded Cap        |
| 32     | 0371-451  | Rotor Shaft         |
| 38     | 0204-039  | Earth Connection    |
| 44     | 0204-148  | Motor Housing       |
| 45     | 0371-454  | Drive Shaft         |
| 46     | 0371-452  | Connecting Ring     |
| 48     | 0204-153  | Trigger             |
| 52     | 0204-155  | Pressure Valve      |
| 65     | 0205-000  | Key                 |

\* Recommended Spare Parts

- For use in Hazardous Area w/ Pump Tubes in Stainless or Hastelloy C.